



**India Meteorological Department  
(Ministry of Earth Sciences)**

**SPECIAL MESSAGE (Modified)**

**TIME OF ISSUE: 1330 HOURS IST**

**DATED: 09.11.2021**

**FROM: INDIA METEOROLOGICAL DEPARTMENT (FAX NO. 24643965/24699216/24623220)**

**TO: CONTROL ROOM, NDM, MINISTRY OF HOME AFFAIRS (FAX.NO. 23093750)  
CONTROL ROOM NDMA (FAX.NO. 26701729)  
CABINET SECRETARIAT (FAX.NO.23012284, 23018638)  
PS TO HON'BLE MINISTER FOR S & T AND EARTH SCIENCES (FAX NO.23316745)  
SECRETARY, MOES, (FAX NO. 24629777)  
H.Q. (INTEGRATED DEFENCE STAFF AND CDS) (FAX NO. 23005137/23005147)  
DIRECTOR GENERAL, DOORDARSHAN (23385843)  
DIRECTOR GENERAL, AIR (23421105, 23421219)  
PIB MOES (FAX NO. 23389042)  
UNI (FAX NO. 23355841)  
D.G. NATIONAL DISASTER RESPONSE FORCE (NDRF) (FAX NO. 26105912, 2436 3260)  
DIRECTOR, PUNCTUALITY, INDIAN RAILWAYS (FAX NO. 23388503)  
CHIEF SECRETARY, MAHARASHTRA (FAX NO 022-22028594)  
CHIEF SECRETARY, GUJARAT (FAX NO 079-23250305)  
ADMINISTRATOR, DAMAN, DIU, DADRA & NAGAR HAVELI (FAX NO 0260-2230775)  
CHIEF SECRETARY, GOA (FAX NO 0832-2415201)  
CHIEF SECRETARY, KARNATAKA (FAX NO 080-22258913)  
CHIEF SECRETARY, KERALA (FAX NO 0471-2327176)  
ADMINISTRATOR, LAKSHADWEEP (FAX NO 04896-26284)  
CHIEF SECRETARY, ANDAMAN & NICOBAR ISLANDS (FAX NO. 03192- 232656)  
CHIEF SECRETARY, ANDHRA PRADESH (FAX NO. 0863-2441029, 08645-246600)  
CHIEF SECRETARY, TAMIL NADU (FAX NO 044-25672304)  
CHIEF SECRETARY, PUDUCHERRY (FAX NO 0413-2334145)**

**Sub: (a) Low Pressure Area formed over southeast Bay of Bengal.**

**(b) Well Marked Low Pressure Area (remnant of the Depression) over central parts of Arabian Sea**

**(a) Low Pressure area over southeast Bay of Bengal**

Under the influence of the cyclonic circulation over southeast Bay of Bengal & neighbourhood, a low pressure has formed over the same region at 0830 hrs IST of today, the 9<sup>th</sup> November 2021. It is likely to concentrate into a Depression over southwest & adjoining southeast Bay of Bengal during next 36 hours. It is likely to move west – northwestwards and reach near north Tamilnadu coast by the early morning of 11<sup>th</sup> November, 2021.

In association with this formation, there would be a continuation of the ongoing active rain spell over Tamil Nadu till 11<sup>th</sup> November.

## **Warnings:**

### **(i) Rainfall (warning graphics enclosed)**

**9<sup>th</sup> Nov.:** Light to moderate rainfall at most places with **heavy to very heavy rainfall falls & extremely heavy falls at isolated places** very likely over south coastal Tamil Nadu.

**10<sup>th</sup> Nov.:** Light to moderate rainfall at most places with **heavy to very heavy rainfall** at a few places & extremely heavy falls at isolated places very likely over coastal Tamil Nadu and heavy to very heavy rainfall at isolated places over south coastal Andhra Pradesh.

**11<sup>th</sup> Nov.:** Light to moderate rainfall at most places **with heavy to very heavy rainfall & extremely heavy falls** at isolated places very likely over coastal Tamil Nadu south coastal Andhra Pradesh.

**12<sup>th</sup> Nov.** Light to moderate rainfall at most places with **heavy rainfall** at isolated places very likely over Tamil Nadu.

### **(ii) Wind warning**

- Squally wind speed reaching 45-55 kmph gusting to 65 kmph likely to prevail over southeast Bay of Bengal , southwest & adjoining west-central Bay of Bengal and along & off Tamil Nadu & south Andhra Pradesh coasts during 9<sup>th</sup> – 11<sup>th</sup> November.

### **(iii) Sea condition**

- Sea condition will be rough to very rough over southeast Bay of Bengal, southwest & adjoining west-central Bay of Bengal and along & off Tamil Nadu & south Andhra Pradesh coasts during 9<sup>th</sup> – 11<sup>th</sup> November.

### **(iv) Fishermen Warning (in association with the likely formation of the system)**

- Fishermen are advised not to venture into southeast Bay of Bengal, southwest & adjoining west-central Bay of Bengal and along & off Tamil Nadu & south Andhra Pradesh coasts during 9<sup>th</sup> – 11<sup>th</sup> November (Graphics enclosed).

## **(v) EXPECTED IMPACT & ACTION SUGGESTED**

### **A. Impact Expected**

- Localized Flooding of roads, inundation and water logging in low lying areas and closure of underpasses mainly in urban areas of the above region.
- Occasional reduction in visibility due to heavy rainfall.
- Disruption of traffic in major cities due to water logging in roads leading to increased travel time.
- Minor damage to kutcha roads.
- Possibilities of damage to vulnerable structure.
- Localized Landslides/Mudslides
- Damage to horticulture and standing crops in some areas due to inundation.
- It may lead to riverine flooding in some river catchments (for riverine flooding please visit Web page of CWC)

### **B. Action Suggested**

- Check for traffic congestion on your route before leaving for your destination.
- Follow any traffic advisories that are issued in this regard.
- Avoid going to areas that face the water logging problems often.
- Avoid staying in vulnerable structure.

**(b) Well Marked Low Pressure Area over central parts of Arabian Sea (remnant of the Depression)**

The Well Marked Low Pressure Area over central parts of Arabian Sea persisted over the same region at 0830 hrs IST of 9<sup>th</sup> November, 2021. It is likely to move west-southwestwards during next 03 days.

**Warnings:**

**(i) Rainfall**

- No heavy rainfall warning in association with the system.

**(ii) Wind warning**

- Squally weather with wind speed reaching 40-50 kmph gusting to 60 kmph likely to prevail over central parts of Arabian Sea during next 24 hours.

**(iii) Sea condition**

- Sea condition will be rough to very rough over central parts of Arabian Sea during next 24 hours

**(iv) Fishermen Warning**

- Fishermen are advised not to venture into central parts of Arabian Sea during next 24 hours.

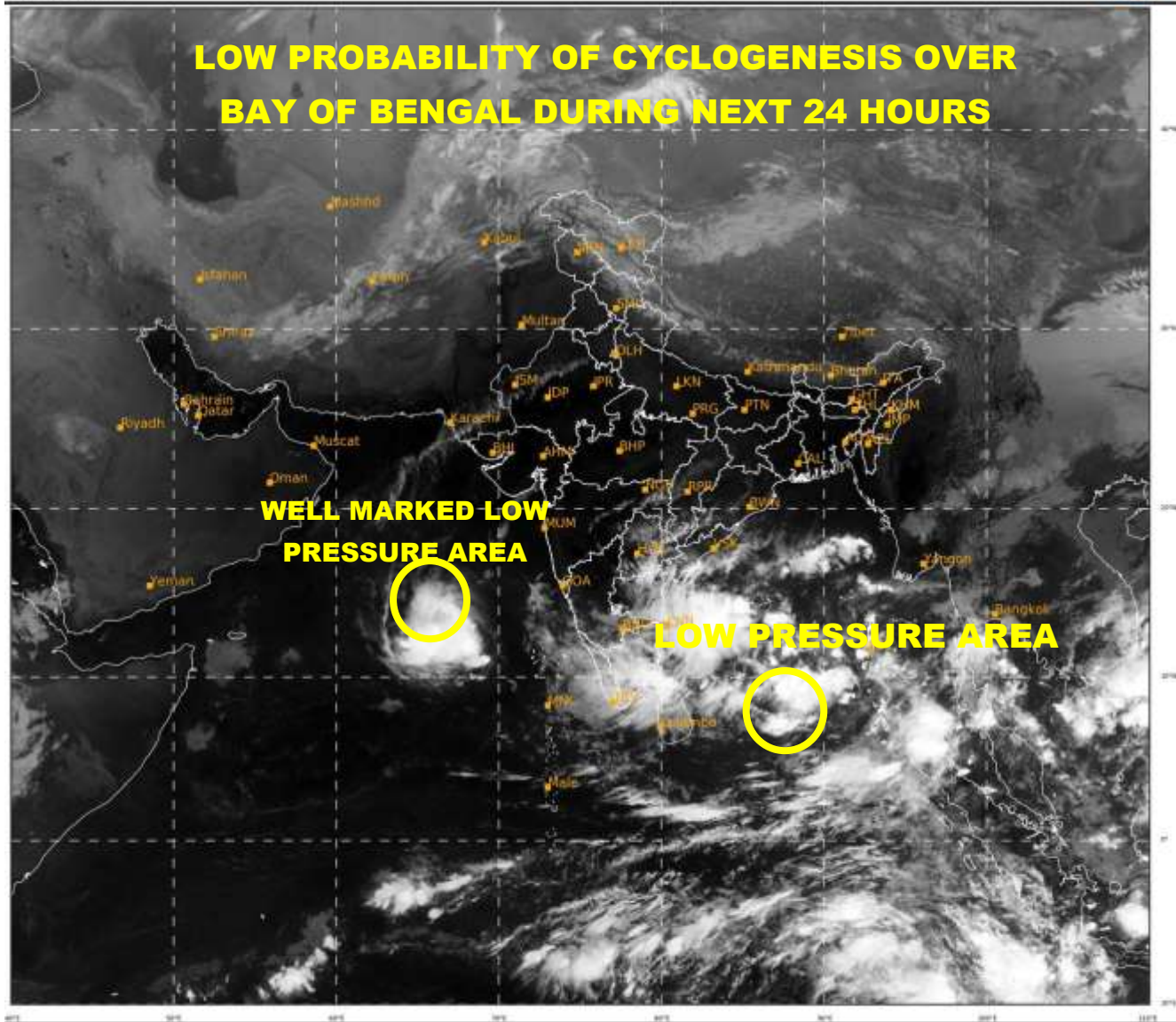
**(Sunitha Devi. S)  
Scientist-F, RSMC, New Delhi**

*Copy to: ACWC Mumbai/ CWC Ahmedabadr/MC Goa/CWC Thiruvananthapuram*

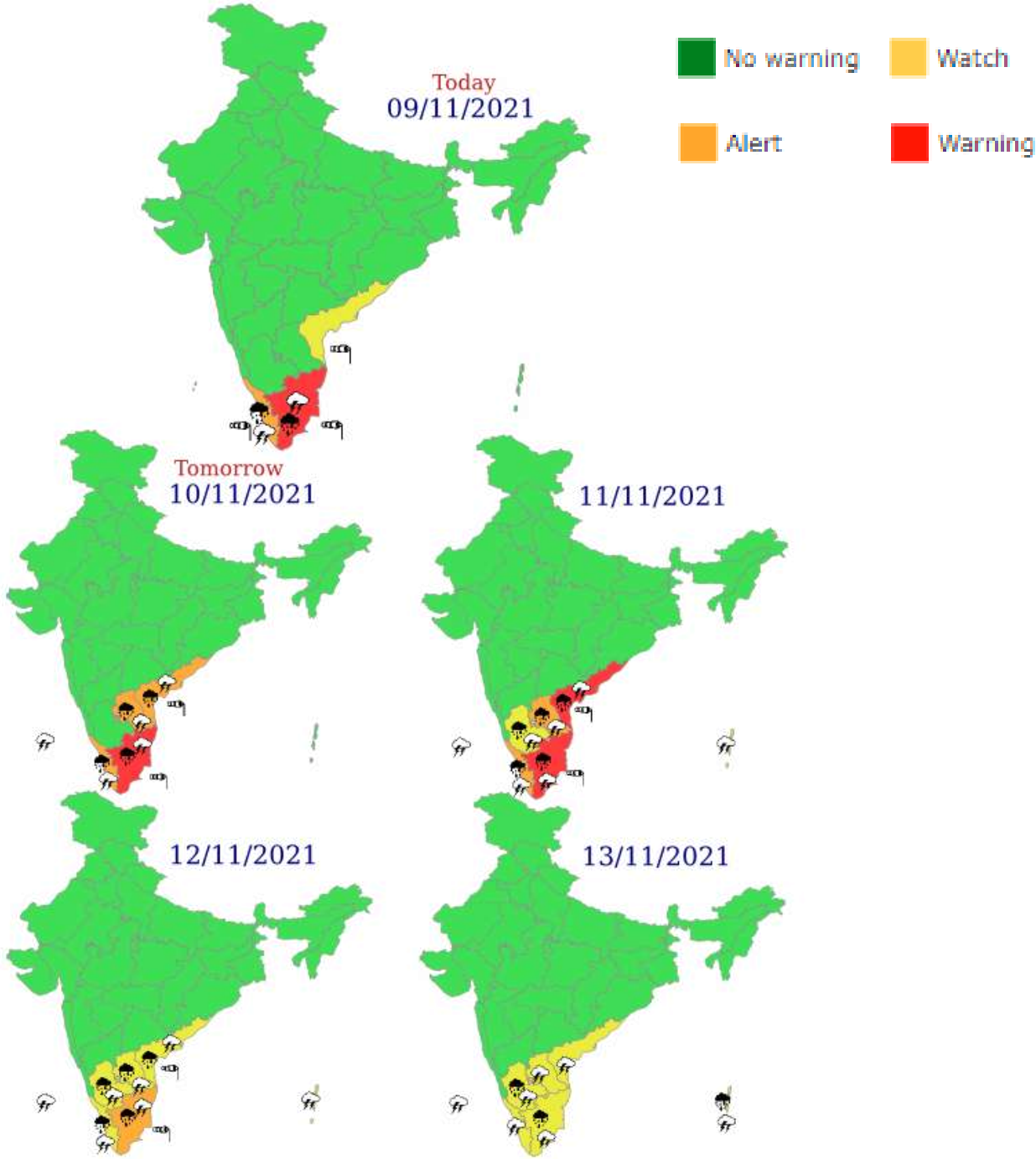
**LEGEND: Heavy Rainfall:** 64.5 to 115.5mm, **Very Heavy Rainfall:** 115.6 to 204.4mm **Most Places:** more than 76% of total stations, **Isolated Places:** Less than 25% of total stations



# LOW PROBABILITY OF CYCLOGENESIS OVER BAY OF BENGAL DURING NEXT 24 HOURS

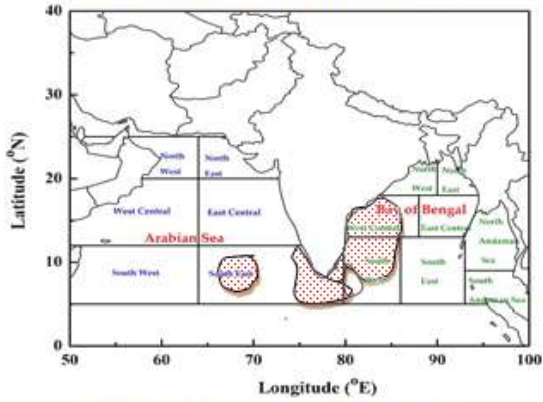


# Meteorological Sub-division level heavy rainfall warning

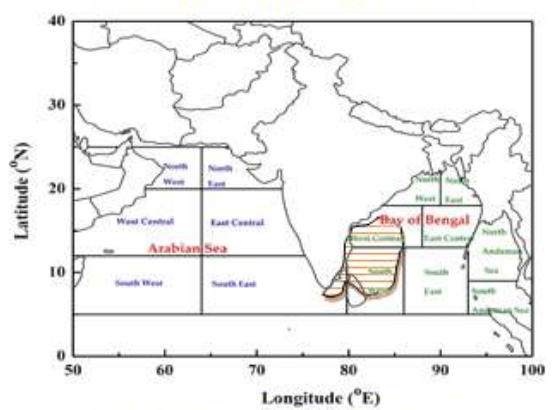


**INDIA METEOROLOGICAL DEPARTMENT**  
**FISHERMAN WARNING FOR BAY OF BENGAL AND ARABIAN SEA**

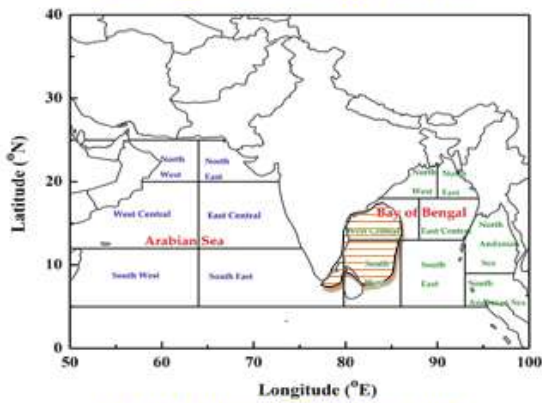
DAY-1: 09.11.2021/0600 UTC TO 10.11.2021/0600 UTC



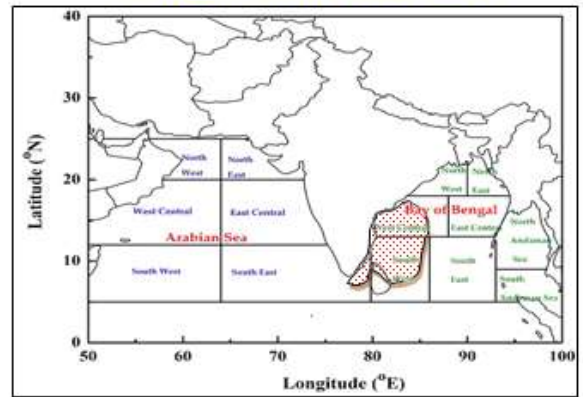
DAY-2: 10.11.2021/0600 UTC TO 11.11.2021/0600 UTC



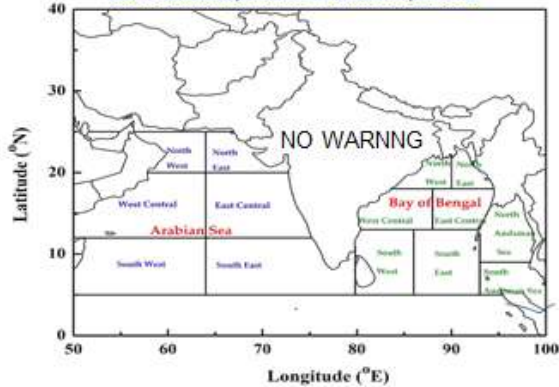
DAY-3: 11.11.2021/0600 UTC TO 12.11.2021/0600 UTC



DAY-4: 12.11.2021/0600 UTC TO 13.11.2021/0600 UTC



DAY-5: 13.11.2021/0600 UTC TO 14.11.2021/0600 UTC



**AREA UNDER FISHERMEN WARNING**

- 40-50 KMPH GUSTING TO 60 KMPH (SQUALLY WEATHER)
- 45-55 KMPH GUSTING TO 60 KMPH (SQUALLY WEATHER)
- 50-60 KMPH GUSTING TO 70 KMPH (STRONG WIND)